



RICH COTTON APPARELS LIMITED

100% Export Oriented Woven Garments Factory



COMPANY PROFILE

www.richcottonapparels.net

RICH COTTON APPARELS LIMITED is 100% export-oriented woven garment manufacturer, specializing in high-quality bottoms for men's ladies and kids. We have built strong commitment to quality, on-time delivery and worker safety in our factory premises. We are proudly serving few of leading international brands with consistency and full of care.

Our production facility is equipped with modern machineries and operated by skilled and experienced workforce. We developed and guarantee direct raw materials sourcing and ensure smooth production process.

We offer several social, safety and product certifications from different global institutions. And currently we have valid certifications as BSCI (Amfori), SEDEX, WRAP, C-TPAT, RSC, OEKO-TEX Standard 100, BETTER COTTON, GOTS, OCS, GRS, RCS, LEED, ISO 9001:2015, and ISO 14001:2015.

As a proud member of the RMG Sustainability Council (RSC), we are dedicated to maintaining high standards fire safety, structural integrity, and electrical safety in our production premises.

At Rich Cotton Apparels, we strive to blend ethical manufacturing with world-class quality, aiming to deliver garments that meet the expectations of valued global brands around the world.



THE CONTENT

About Us	04
MD Statement	05
Company History	06
Mission & Vission	07
Company Details	08
Company Location	09
Bank Details	10
Organogram	11
Main Markets & Locations	12
Business Volume & Product Variet	13
Specialized Machine List	14
Machine List	16
Certification	18
Brands	19
Our Products	21
Commitment to Workplace Safety	37
Photo Gallery	39
Future Expantion Plan	62

ABOUT US



Statistics



2000+

Number of Manpower



100%

On Time Delivery



0.5%

Recheck / Rework



500,000 pcs

Production Capacity/Month



\$35 Million

Turnover 2025



6 Million pcs

Exported Quantity (pcs) in 2025



MD STATEMENT

Mamun Reza Jake

Managing Director

Rich Cotton Apparels Ltd., founded by the enterprising Mr. Mamun Reza Jake, has rapidly emerged as a leading name in the woven garment manufacturing sector of Bangladesh. Under his visionary leadership, the company has built a strong reputation for excellence, innovation, and integrity.

Mr. Jake's forward-thinking approach emphasizes quality craftsmanship, sustainable production, and ethical responsibility. His unwavering commitment to empowering people, maintaining global standards, and ensuring customer satisfaction continues to drive the company's growth and success.



“ WE STITCH QUALITY GARMENT
WE GUARANTEE ON TIME DELIVERY
AND
WE RESPECT THE PARTNERSHIP ”

COMPANY HISTORY

STAGE 6 – 2025



INFRASTRUCTURE & UTILITY EXPANSION

- Expanded Production Line 8 to increase manufacturing capacity.
- Secured:**
 - Substation permission from the Ministry of Power, Energy and Mineral Resources.
 - Generator permission from the Bangladesh Energy Regulatory Commission.
- Initiated construction of a 6-story building designated for: Store, Cutting section, Finishing section, Sample section, Office, Showroom
- Initiated construction of a 3-story facility building.

STAGE 5 – 2024



EXPANSION & GLOBAL STANDARDS

- Expanded to 4 additional production lines.
- Secured:**
 - Bond Licence, EPB, REX Number, Boiler License
 - Achieved globally recognized certifications: GOTS, OCS, GRS, RCS, OEKO-TEX Standard 100, ISO 9001:2015, ISO 14001:2015, RSC

STAGE 4 – 2023



PRODUCTION LAUNCH & CERTIFICATION

- Launched the first production line.
- Began construction of a new office building.
- Secured BGMEA Membership and BGMEA Insurance Benefits.
- Achieved key international certifications: Amfori BSCI, Sedex

STAGE 3 – 2022



CONSTRUCTION & INITIAL COMPLIANCE

- Initiated construction work for factory infrastructure. Registered with the Department of Textiles, Bangladesh.
- Obtained key licenses: Trade License, Fire License, Factory License
- Secured memberships and clearances: BKMEA Membership, IRC, ERC, BIN
- NOC for business operations from Gazipur City Corporation.

STAGE 2 – 2021



LEGAL ESTABLISHMENT

- Purchased 77,536 sq. ft of land for the factory.
- Officially registered as a Joint Stock Company and Firm with the Government of Bangladesh.
- Enlisted with the National Board of Revenue (NBR).

STAGE 1 – 2020



FOUNDATION

- Established the foundation of the woven factory, marking the commencement of operations.

MISSION

Our mission is to foster continuous innovation, embrace environmentally sustainable production, and prioritize customer satisfaction at every stage of our operations.

“From Bangladesh to the World – Fashion with Integrity”

& VISSION

To become a globally recognized and socially responsible garment manufacturer, setting new benchmarks for quality, sustainability, and ethical manufacturing practices. We are committed to contributing for sustainable economic growth in Bangladesh. We empower workforce and delivering innovative that meet our customers expectation.

“Uncompromising quality, exceptional value. Experience the difference.”

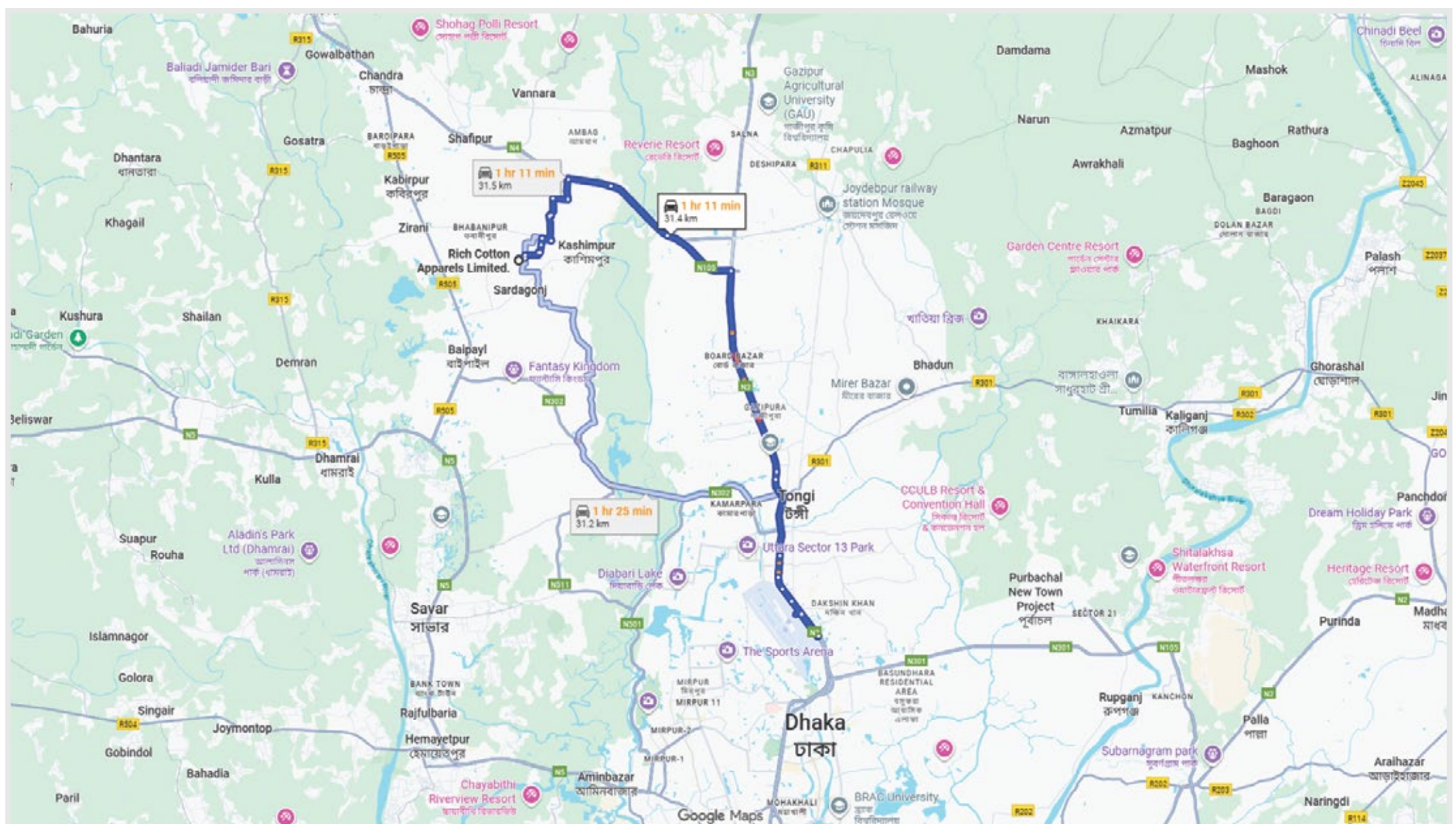
C COMPANY DETAILS

<i>Name of Company</i>	: Rich Cotton Apparels Limited
<i>Years of Establishment</i>	: 2020
<i>Legal Status</i>	: Private Company
<i>Type of Business</i>	: Manufacture and Export of RMG (Woven Factory)
<i>Factory Address</i>	: Sardagonj, Kashimpur, Gazipur Sadar Gazipur, Bangladesh
<i>Contact Person</i>	: Mamun Reza Jake (Managing Director)
<i>Contact Number</i>	: +880 1715 865 149
<i>E-Mail</i>	: jake@richcotton.net
<i>Website</i>	: www.richcottonapparels.net
<i>Member of</i>	: BGMEA (Bangladesh Garments Manufacturers & Exporters Association)
<i>Factory space</i>	: 1056663 sq.ft
<i>Total Employees</i>	: 2000+
<i>Machine</i>	: 1200 Nos
<i>Production Line</i>	: 20 Line
<i>Production Capacity</i>	: 25000 pcs/per day.
<i>Lead time</i>	: 120 days.
<i>Turnover</i>	: US \$ 22 Million.
<i>Products</i>	: All kind of woven bottoms.
<i>Market Coverage</i>	: EU, USA, Canada, UK & South Africa.
<i>GSP Facility</i>	: GSP Facilities for European Union Countries.

COMPANY LOCATION



Located in Sardagonj, Kashimpur area. 31 KM from Airport



BANK DETAILS



PUBALI BANK PLC

Account Name : Rich Cotton Apparels Limited
Account Number : 0340901102012
Branch : Motijheel Corporate Branch
Address : Sena Kalyan Bhaban
195, Motijheel C/A, Dhaka-1000, Bangladesh

Swift Code : PUBABDHH195



JAMUNA BANK PLC

Account Name : Rich Cotton Apparels Limited
Account Number : 1001-001349353
Branch : Gulshan Corporate Branch
Address : Jamuna Bank Tower,
Plot # 14, Bir Uttam A. K. Khandaker Road,
Block # C, Gulshan-1, Dhaka-1212, Bangladesh

Swift Code : JAMUBDDH057



STANDARD BANK PLC

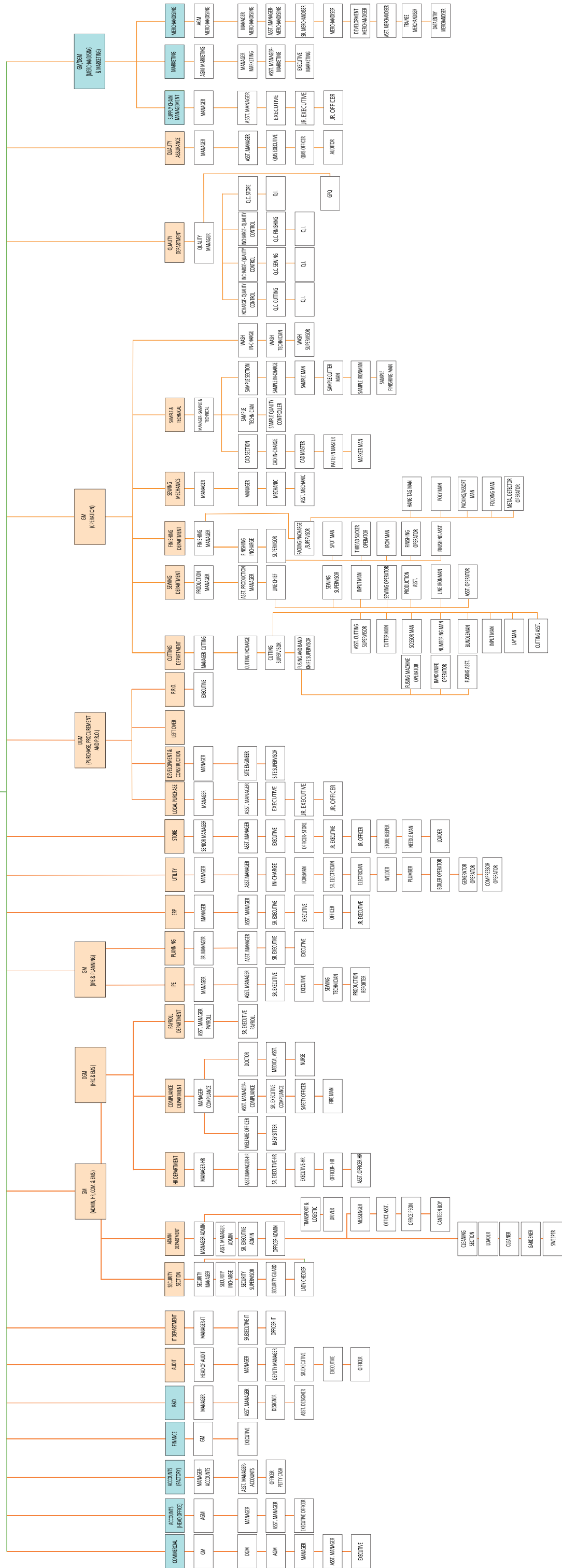
Account Name : Rich Cotton Apparels Limited
Account Number : 051-33000563
Branch : Green Road Branch
Address : Castle Green (1st Floor)
142, Green Road, Dhaka-Bangladesh

Swift Code : SDBLBDDH122



ORGANOGRAM

MANAGING DIRECTOR



MAIN MARKETS & LOCATIONS



Europe



USA



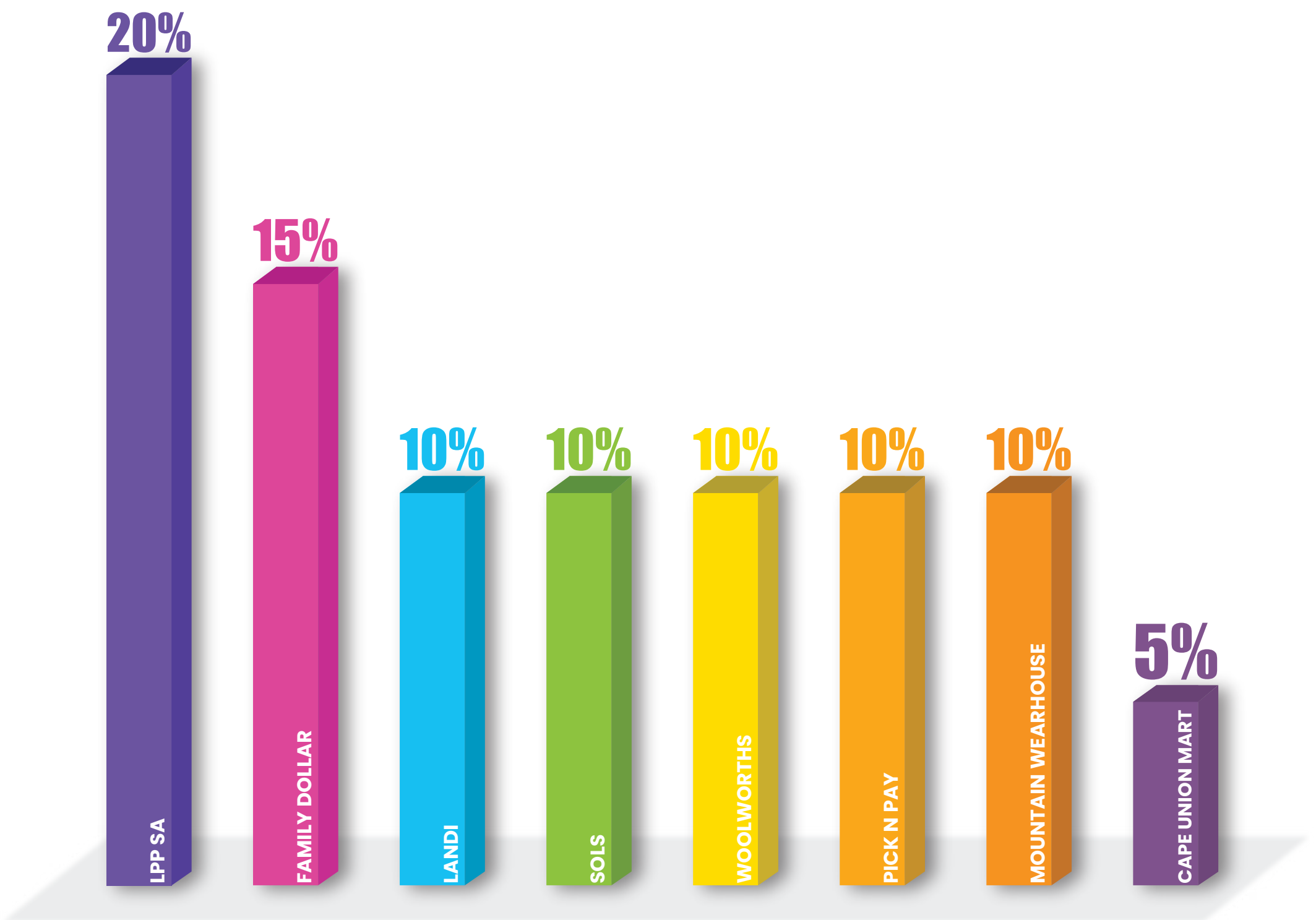
UK



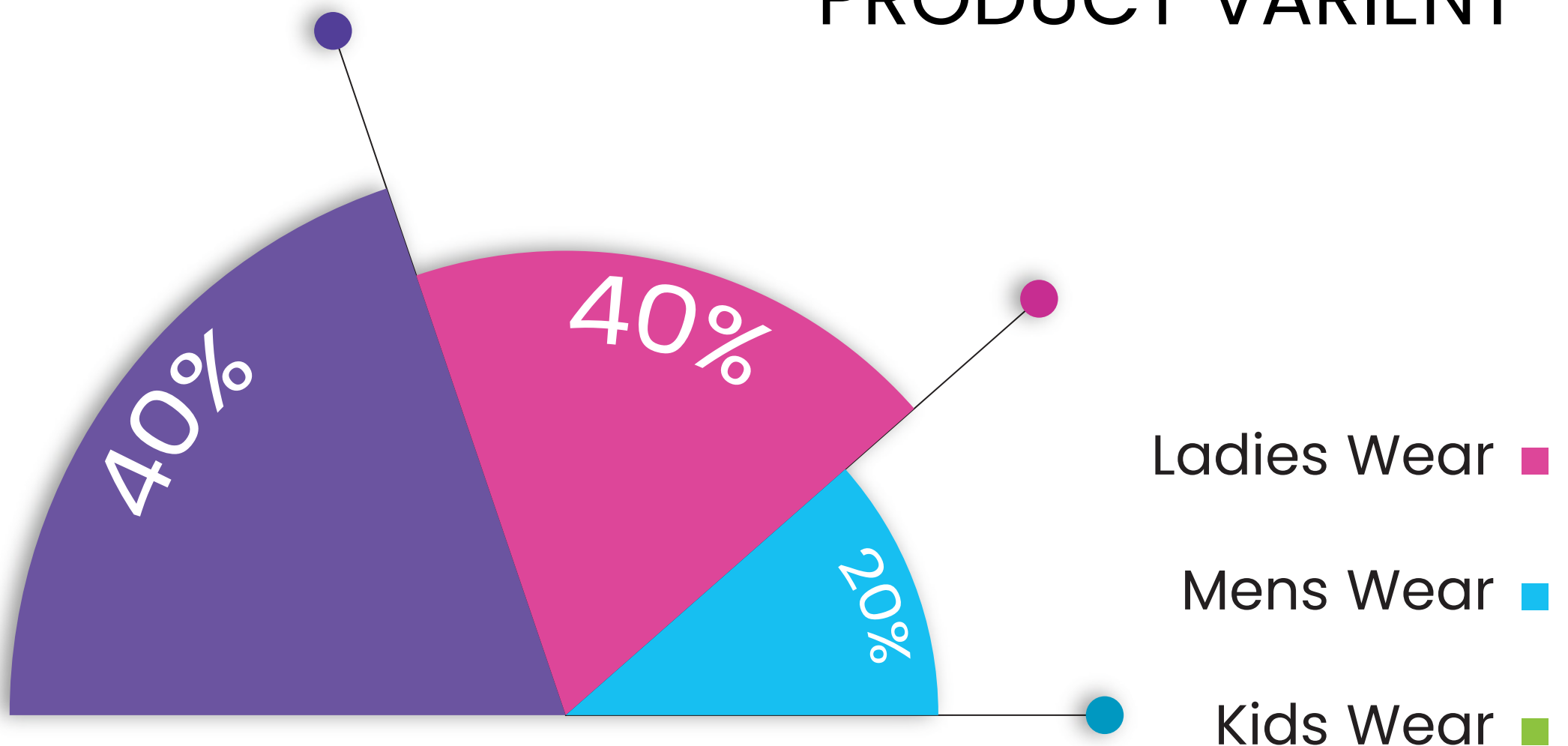
South Africa



BUSINESS VOLUME



PRODUCT VARIENT



Specialized Machine List

SL	NAME OF MACHINERY	BRAND	QNTY
(SEWING)			
1	CYCLE MACHINE (VELCRO ATTACHED)	JUKI	7
2	LOCKSTITCH, AUTOMATIC WELTING MACHINE (BONE POCKET)	JUKI	6
3	ZIG ZAG STITCHING MACHIME	JUKI	2
4	11 NEEDLE WAISTBANDING MACHINE	KANSAI	15
5	SNAP BUTTON ATTACH MACHINE	NISHO	16
6	SADDLE STITCH MACHINE	JUKI	2
7	BLIND STITCH MACHINE	TONY	2
			50
(OTHERS)			
1	SEAM SEALING MACHINE	VIM	2
2	DEHUMIDIFIER MACHINE	SERAPHIC	2
			4
			54

Machine List

SL	NAME OF MACHINERY	BRAND	QNTY
(SEWING)			
1	1-NEEDLE, LOCKSTITCH SEWING MACHINE	JUKI	380
2	1-NEEDLE VERTICAL EDGE TRIMMER MACHINE	JUKI	30
3	2 NEEDLES 4 THREAD OVERLOCK MACHINE	JUKI	50
4	3-NEEDLE, 6-THREAD OVERLOCK MACHINE	JUKI	20
5	2 NEEDLES 4 THREAD OVERLOCK MACHINE	PEGASUS	1
6	2-NEEDLE, 5-THREAD, SAFETY STITCH OVER LOCK MACHINE	JUKI	70
7	2- NEEDLE LOCKSTITCH FIXED NEEDLE BAR MACHINE	JUKI	30
8	2- NEEDLE LOCKSTITCH FIXED NEEDLE BAR MACHINE	JUKI	32
9	2 NEEDLE, NEEDLE FEED, LOCKSTITCH ORGANISED SPLIT NEEDLE BAR	JUKI	20
10	3-NEEDLE, FEED OFF-THE-ARM (HEAVY DUTY)	JUKI	24
11	BARTACK MACHINE	JUKI	40
12	BUTTON SEWING MACHINE	JUKI	10
13	BUTTON HOLE MACHINE	JUKI	10
14	EYELET BUTTON HOLE MACHINE	JUKI	5
15	2-NEEDLE, DOUBLE CHAINSTITCH MACHINE	JUKI	7
16	3- NEEDLE CHAINSTITCH MACHINE	SIRUBA	7
17	CYCLE MACHINE (VELCRO ATTACHED)	JUKI	7
18	LOCKSTITCH, AUTOMATIC WELTING MACHINE (BONE POCKET)	00000	6
19	ZIG ZAG STITCHING MACHIME	JUKI	2
20	ZIG ZAG STITCHING MACHIME	KANSAI	15

Machine List

SL	NAME OF MACHINERY	BRAND	QNTY
21	SNAP BUTTON ATTACH MACHINE	NISHO	16
22	15-NEEDLE WAISTBANDING MACHINE WITH EXTRA CLOTH PULLER	KANSAI	10
23	BOTTOM HEM MACHINE	JUKI	1
24	FLAT BED TOP & BOTTOM MACHINE	JUKI	12
25	POCKET FACING MACHINE	KANSAI	7
26	SADDLE STITCH MACHINE	JUKI	2
27	BLIND STITCH MACHINE	TONY	2
28	06 NEEDLE DLR MACHINE	KANSAI	2
29	PMD MACHINE	KANSAI	2
			820
(OTHERS)			
1	10 INCH KNIFE & CLOTH CUTTING MACHINE	KM	8
2	AUTOMATIC END CUTTER MACHINE	EASTMAN	4
3	FUSING PRESS MACHINE	HASHIMA	1
4	FUSING MACHINE	HASHIMA	1
5	THREAD RE-CONING MACHINE	HASHIMA	2
6	THREAD SUCTION MACHINE	NISHO	2
7	BUTTON TESTING MACHINE (PULL TEST)	SAF GUARD	1
8	SPOT CLEANING MACHINE	NISHO	1
9	HEAT TRANSFER PRESS	HASHIMA	2
10	STEAM IRON	VEIT	20

Machine List

SL	NAME OF MACHINERY	BRAND	QNTY
11	VACCUM IRON TABLE WITH BUCK	TIAN	7
12	VIET TABLE	VEIT	15
13	VELCRO TAPE MULTI CUTTER MACHINE	CUTEX	1
14	PLASTIC STAPLE ATTACHER	DENNISION	2
15	FABRIC INSPECTION-RELAXING-WINDING MACHINE	MEL	1
16	FABRIC INSPECTION-RELAXING-WINDING MACHINE	UZU	2
17	POCKET CREASER MACHINE	JEUX	1
18	DOUBLE HEAD NEEDLE DETECTOR	HASHIMA	1
19	SEAM SEALING MACHINE	VIM	2
21	FABRIC CUTTER MACHINE LU933 (RIB CUTTER)	DINO	1
21	INKJET PATTERN CUTTING PLOTTER	WINDA	1
22	MARKAR PLOTTER MACHINE	WINDA	1
23	MARKAR PLOTTER MACHINE	AORUI TECH	1
24	DEHUMIDIFIER MACHINE	SERAPHIC	2
			80
GRAND TOTAL			900

Certifications




(On Process)



BRANDS

The logo for 'sinsay' is written in a bold, lowercase, sans-serif font. The 'i' has a dot, and the 'y' has a tail that curves slightly to the left.The logo for 'Extremely Me' features the word 'Extremely' in a bold, sans-serif font, followed by 'Me' in a slightly larger, bold, sans-serif font. A registered trademark symbol (®) is at the end.The logo for 'WORKER' has the word 'WORKER' in a bold, uppercase, sans-serif font. The 'O' is replaced by a stylized graphic of a red and black headset.The logo for 'SOL's' features the word 'SOL's' in a large, stylized, sans-serif font. Below it, the tagline 'the fair spirit' is written in a smaller, lowercase, sans-serif font.The logo for 'NEO BLU' has the words 'NEO' and 'BLU' stacked vertically in a large, bold, sans-serif font. Below them, the tagline 'PEOPLE IN MOTION' is written in a smaller, uppercase, sans-serif font.The logo for 'WOOLWORTHS' features a large, white, stylized 'W' inside a dark gray square. Below the square, the word 'WOOLWORTHS' is written in a bold, uppercase, sans-serif font.The logo for 'REALman' features a stylized silhouette of a bird in flight above the word 'REALman' in a bold, sans-serif font. The 'R' is particularly large and bold.

REAL
woman

REAL  **TEEN**

REAL
Kids



LONSDALE™
LONDON



OUR Products

































Commitment to Workplace Safety

We are fully committed to worker safety by maintaining proper safety equipment, emergency systems, and protective facilities in all production areas.



40 pcs

Helmet



40 pcs

Blanket



32 pcs

Fire Hook



32 pcs

Fire Bitter



10 pcs

Stretcher



45 pcs

Gas Mask



39 pcs

Hand Gloves



37 pcs

Gum Boot



39 pcs

Filter Musk



10 pcs

Lock Cutter



10 pcs

Manila Rope



35 pcs

Belcha



39 pcs

Safety Belt



10 pcs

Bucket



2 pcs

Bucket Stand



10 pcs

Fire Equipment Box



27 pcs

Fire door



166 pcs

Fire Extinguisher



146 pcs

Exit Sign



31 pcs

Fog Light



10 pcs

Hose Reel



1 pcs

Fire Alarm Control Panel



36 pcs

Heat Detector



201 pcs

Multi detector



48 pcs

Output Module



40 pcs

Manual Pull Station



21 pcs

Sounder & Strobe



56 pcs

Audio sounder



32 pcs

Exhaust Fan



13 pcs

First Aid Box

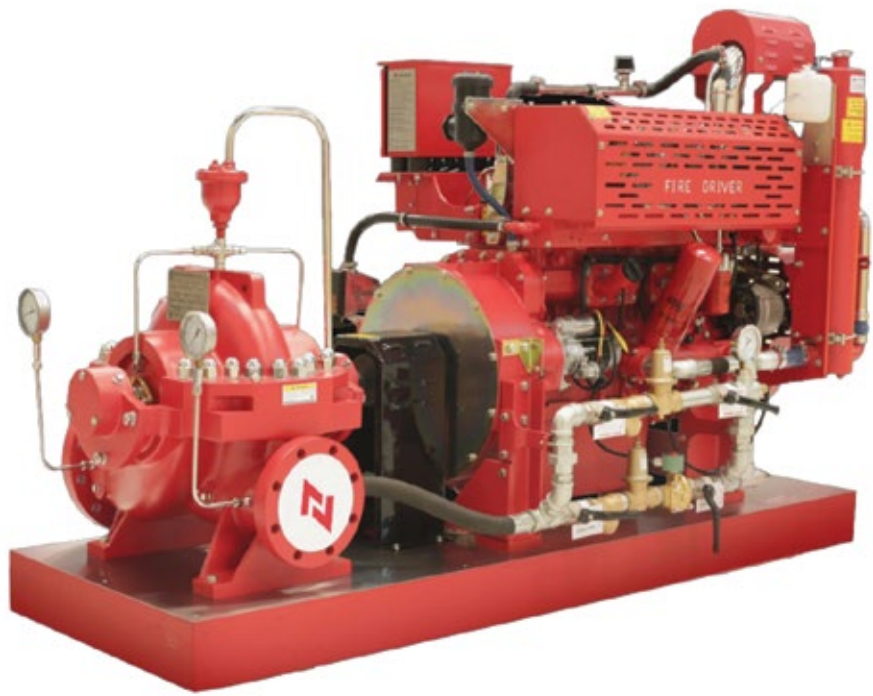
Electric Fire Pump

NF-S-200-125



Diesel Fire Pump

NF-S-200-125



Jockey Pump

NFVL4-140



ADMIN BUILDING



PRODUCTION BUILDING

UTILITY BUILDING



SERVICE BUILDING

BOILER ROOM



GENARATOR ROOM

COMPRESSOR ROOM



SUB STATION

BONDED WEARHOUSE



FABRIC STORE

ACCESSORIES STORE



GENAREL STORE

MOISTURE ROOM



FINISHED GOODS STORE

FABRIC RELAXATION AREA



FABRIC INSPECTION

CUTTING FLOOR



FUSING PROCESS

SEWING FLOOR



QUALITY SECTION

FINISHING PROCESS



ERP ATTENDANCE SYSTEM

CAD ROOM



WORKERS PERSONAL BELONGINGS CABINET

CANTEEN



DINING ROOM

PRAYER ROOM



MEDICAL ROOM

CHILD CARE



WATER DRINKING FACILITY

FIRE SAFTEY TRAINING



FAST AIDER TRAINING

FIRE DRILL



SECURITY TRAINING

EID CELEBRATION 2025



EID CELEBRATION 2025

PICNIC 2025



PICNIC 2025



PICNIC 2025



PICNIC 2025

PICNIC 2025



PICNIC 2025

GREEN AREA



GREEN AREA

SCALE -1/16"=1'-0"

3D PICTURES

Facility Building



Facility Building



Production Building



Connecting Bridge RCC with Steel (Production Building)



Side view (Production Building)



Roof Top of Production Building





A committed and trustworthy woven apparel manufacturer.



Contact Us

Phone : +8801715865149

Email : jake@richcotton.net

Sardagonj, Kashimpur, Gazipur Sadar

Telephone : +880244806291

Web : www.richcottonapparels.net

Gazipur, Bangladesh